

# Advanced Cell Training Practitioner Quick Start Guide

HOW TO WORK WITH CLIENTS TO DISCERN CELLULAR ERRORS AND  
SELECT THE CODES FOR CORRECTION

GARY BLIER



# Table Of Contents

ACT PARADIGMS ..... 2

ACT PRINCIPLES..... 2

What ACT Coach/Practitioner will do ..... 2

    General Overview ..... 2

    Working with clients ..... 3

    Gary’s Wishes..... 3

    Symptom Stonehenge..... 4

Joint & Muscle Pain..... 5

Brain / Neurological ..... 6

Exhaustion Chronic Fatigue..... 7

Digestive Elimination ..... 8

Lumps, Bumps, Cysts & Tumors..... 9

Chemical Sensitivity MCS..... 10

Migraines & Headaches ..... 11

Acne & Skin Issues..... 12

Menses & Menopause ..... 13

Hair Issues ..... 14

Panic, Anxiety, Ptsd, OCD..... 15

Depression, Suicide ..... 17

Heart Palpitations & Issues ..... 19

Lyme Disease..... 20

Lung, Respiratory, Mucous ..... 21

Vaginal & Bladder Issues..... 22

Other ..... 23

No or Stalled symptom reduction? ..... 24

Is your muscle test blocked? ..... 24

## ACT PARADIGMS

- The body can heal itself. It must behave properly at the cellular level in order to do so.
- Acknowledge the body can heal itself. A vast number of “incurable” symptoms and conditions arise from the immune system misbehaviors act offers a way to correct these errant behaviors and restore health.
- The body’s intelligence is a separate intellect and it truly knows how to heal itself. This intelligence is not wired to your mouth, it can’t speak, so much hinges on you asking the right questions. It’s like having dr. Albert einstein connected to the biological internet to give you information. This intelligence is vast. It made you from two cells and it knows what it needs to heal. Honor your clients by deferring to this intelligence.

## ACT PRINCIPLES

- ASK IF THE BODY CAN HEAL THIS SYMPTOM OR CONDITION. If so, what percentage? If you don’t get 100% ask what you can get. Then ask if there are other modalities you could add that will bring your client to 100%
- ASK WHEN THE SYMPTOM STARTED. We’re there circumstances surrounding the onset of the symptoms. Was there an accident, sports injury, relational breakup, divorce, surgery, a family member died, anything that was traumatic for your client? Muscle test if this event supports the symptoms in some way for coding purposes.
- IN YOUR FIRST SESSION “RED FLAG” POTENTIAL SYMPTOM CONTRIBUTORS. Underline in red anything on the health forms you suspect needs to be addressed by codes. Letting the body choose the codes, and prioritize them in the order it wants, you won’t go wrong and you will do much good.
- DON’T WORRY ABOUT HERXES OR DOING ANY HARM. The body will not harm itself. If the kill rate of the microbes would over-toxify the body and cause harm, the body’s intelligence will slow down the rate. If you give the “wrong” codes the body will either ignore them or change them so they do some good.

## What ACT Coach/Practitioner will do

### General Overview

- Identify what symptoms your client wants to address.
- The client must agree to the indemnification agreement by approving it on our website.
- The client should fill out their health history form which is accessible in the Practitioner resource section of the web to help you choose the most effective codes for them.
- Once you select and order your client’s codes, a paypal bill will go out for \$10.00.
- You will coach your client on how to do the codes (There are videos on how to read the codes and do the entire process in the client resource area on the web). You should always be in contact with them within a week to discuss any herxes and why, and to be sure to record symptom reductions. The health history form has a chart you can fill out.
- I will work with ACT Coach/practitioners as needed to ensure their success.

## Working with clients

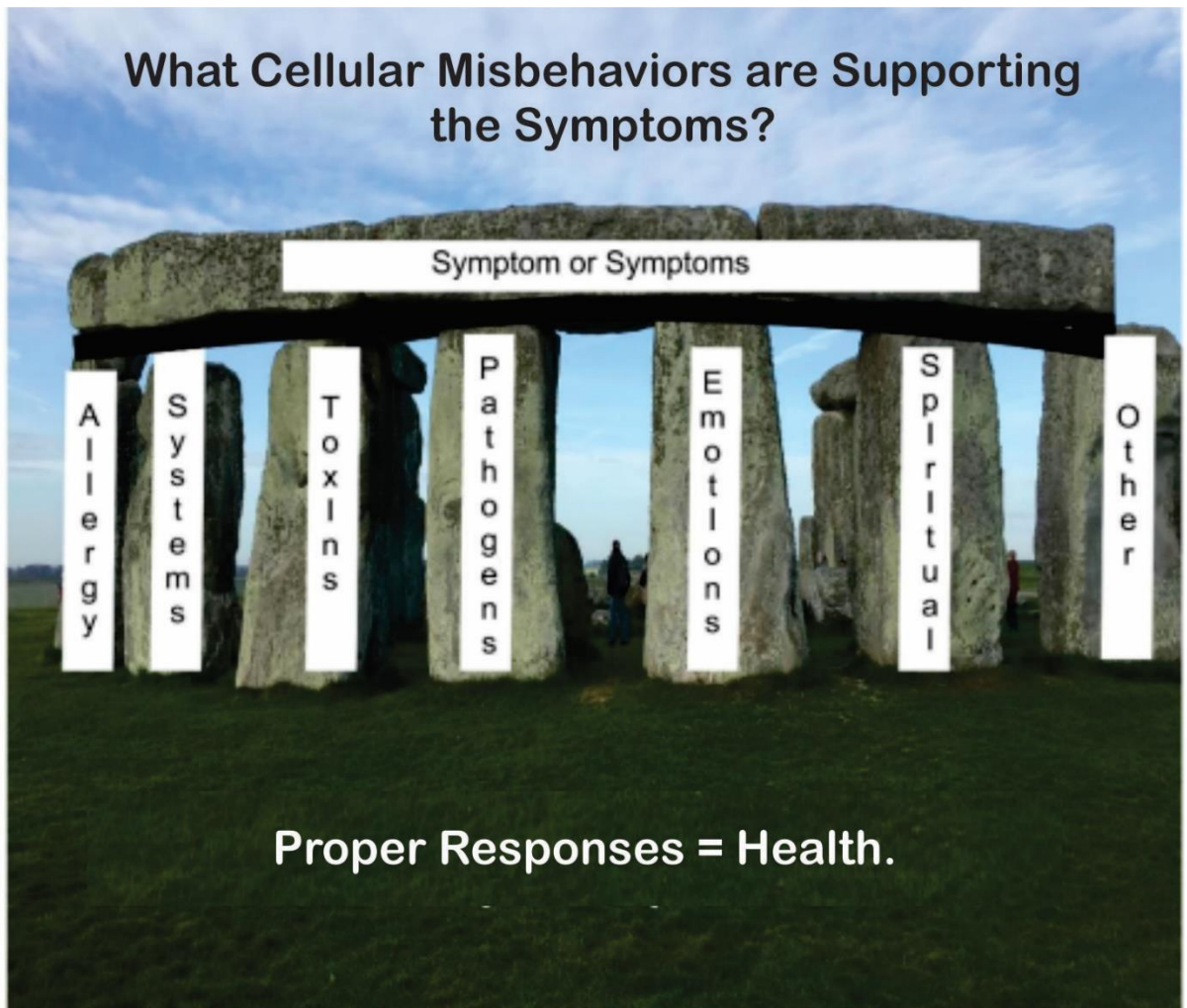
- When you meet with your client, review their health form. Be sure to red flag any events that are contributing to their symptoms. The main question is “What cellular misbehaviors are preventing healing. Red flagging will help you see the repeating patterns in symptom evolution and save you repetitive work at subsequent visits.
- Get the dates the symptoms started. Always ask if there were any extenuating circumstances around that time; divorce, death of a family member, relational break-up, accident, drugs event, or anything they mention. Muscle test if it is germane to a symptom and needs codes.
- You can get a better read with the muscle test if they touch the area there is a pain as they tap the thymus. If there are pathogens, touch the symptom and have them lick their finger as they tap the thymus. If it is emotional, it often helps if they lick their finger to get the microbes out of their body and tap the thymus. You may get a better muscle test.
- Be sure to have a follow-up visit scheduled so you can review the results. If they herxe, always tell them the good news as to why ie; “you killed microbes and the got toxic for a time. It’s why your symptoms got better>” Always review their symptom reduction numbers aloud with them. It forces them to acknowledge their gains. Many who have been ill for years have lost the belief they can get well and won’t believe their gains unless you reinforce it. They need hope and this will increase that.

## Gary’s Wishes

Practitioners continually see results of health improvements with this process among their clients and families. Happy clients mean thriving practices. Practitioners can also always participate in our weekly trainings on zoom for no charge to keep their head in the game. After 20 years of ACT experience, the teachings and methods are here to be shared! I’m eager to pass on what’s been learned.

Gary Blier, Founder of Advanced Cell Training, Inc.

## Symptom Stonehenge



## Joint & Muscle Pain

### Muscle test: does anything on this page need to be coded for?

- Arthritis (Arth)
- Ankylosing Spondylitis (Ansp)
- Autoimmune
- Ghost Pain
- Joint (Tissue (Fascia, Muscle, / Tendon, Bone, Periosteum, Connective, Non-Connective Tissue, collagen.
- Shock
- Rheumatoid (RRA)
- Spider
- Venom
- Insect
- Miasm
- Regeneration (Regen)
- Referred pain
- Gen Nutrient - name
- Genetic
- Miasm
- Allergy

### NOTES

For STIFFNESS & PAIN also Muscle test: does anything on this page need to be coded for? hip grief, bone grief. The Right side is generally dad or male issues, the Left side is mom or female issues.

**ANKYLOSING:** Is your client stiff when they FIRST wake up in the morning? This is very typical of Ankylosing pathogens. They feed at night and will cause stiffness upon arising that disappears after 15 minutes.

Does their body want to call out a specific tissue before other codes are selected? It generally means there is a high level of damage if this is true.

Also, Muscle test: does anything on this page need to be coded for? shock. Where there are high levels of damage there may be high levels of shock which must be processed to restore cell functions. Cells in shock are like people in shock. They don't function well until the shock is gone. Clue? Is your client stiff when he or she FIRST wakes up in the morning?

**Spider bites:** Just as Ticks, vector pathogens of Lyme, spiders may introduce pathogens of Arthritis. Pains in the hands and feet are typically where they begin and spread for there.

**Regen:** If the regenerative systems have stalled, there can be pain from wear and tear on the tissues which aren't being replaced. (also Muscle test: does anything on this page need to be coded for? fibroblast, collagen, Levaquin)

**Gen Nutrient:** If nutrients aren't being absorbed, the regenerative systems may be working but won't have the raw materials to function properly.

**Allergy:** An allergy can have a localized expression on any collection of cells.

Muscle test: does anything on this page need to be coded for? if the body affirms no tissue damage and the pain is being experienced in the brain only.)

## Brain / Neurological

Muscle test: does anything on this page need to be coded for?

- Brain
- Nerve
- Myelin
- Neurological
- Confusion
- Dizzy
- Emotions
- Betrayals.
- Accident
- Trauma
- Seizure
- Habit
- Shock
- Trigger
- Lyme
- Ehrlichia
- Babesia
- Syphilis
- MS
- Parkinsons
- Spinal Fluid infect
- Spirochete
- Pathogens
- Parasites
- Worms
- Pesticides
- Regeneration (Regen)
- Gen Nutrient

- Genetic
- Miasm
- Metals
- Toxins
- Bio war
- Alien (ALYN)

## NOTES

Our primary reason for coming to earth is for love. When parents betray, dizziness can come from the confusion trapped in the brain. Of course Muscle test: does anything on this page need to be coded for? shock and trauma from accidents, betrayals, and seizures

The body having seizures (or neurological overreactions like tremoring) can create a shock/trauma response which may become a habitual response from a trigger, like a sound, light, or even an emf frequency.

Pathogens associated with these conditions often attack the brain.

If the body has been storing toxins in the brain for the year, it might need help from ion cleanse, far infrared sauna, products, celery juice, mucoid plaque removal, or other methods to detoxify faster.

## Exhaustion Chronic Fatigue

Muscle test: does anything on this page need to be coded for?

- [CHECK BRAIN / NEURO PAGE](#) (PG 5)
- Epstein Barr (EBV)
- Flu (FFLU)
- Infect
- Influenza
- Lyme Disease
- Stress, Overwhelm
- Betray, Depress
- Unproc Emotions,
- MTB, Core
- Virus
- Vir Particle
- Blood
- Gen Nutrient
- Deficiencies (do they need product or body not absorbing?)
- Energy
- Infuse
- Sleep

Because the brain and heart use so much energy, please see if their body wants to start there.



## Digestive Elimination

Muscle test: does anything on this page need to be coded for?:

- Allergy to Food
- H Pylori
- Giardia
- Salmonella
- E coli
- Cdiff
- Colon
- Intest
- Stomache (Stom)
- Digest
- Embed
- Parasite (Paras)
- Worm
- Mexican (Mex)
- **Pork Worms**
- Foreign
- Acid
- Digestive Organs
- Gall
- Kidney
- Cyst
- Bacteria
- Virus Flu (Fflu)
- Systems
- Gen Nutrient

### REMEMBER

Microbes that affect the gut will often affect the brain. Scientists have found brain cells in the gut. This means it is very likely that whatever bugs you find

in either organ, the corresponding organ may have the same bugs there, so watch the herxe. You will get a better picture of what is going on in that person's body.

### NOTES

Because many people will hold emotions in their stomach, Muscle test: does anything on this page need to be coded for? the brain quickstart list as well for the stomach.

Also, note that the tissues of the brain and stomach are very similar. Often when targeting brain pathogens, there will be a herxe in the gut and vice versa. This is a clue that you have to Muscle test: does anything on this page need to be coded for? pathogens for both.

**Pork Worms:** Before assigning pork worms be sure the body will approve that the timing is good for the herxe. If so, tapping raw bacon on the thymus helps the body see them.

### SUGGESTION

If Allergy is affirmed, Muscle test: does anything on this page need to be coded for? for leaky gut. If there is a leaky gut, the allergy was probably a result of the undigested food going directly into the bloodstream. The food putrefies and causes stress and then the body will begin to attack food (allergy) as a result of the stress. So addressing the pathogen may be the priority, then be sure regenerative systems are working so the leaky gut heals and then deal with the remaining allergy.

Often, when SIBO is discussed, the underlying reasons for the imbalance have to do with these issues. Once pathogens are killed, the gut is healed, and the digestive system is balanced behaviorally the products to help intestinal flora rebalance will be much more effective.

## Lumps, Bumps, Cysts & Tumors

Muscle test: does anything on this page need to be coded for?

- The Tissue where it Resides: Breast, Ovary, Prostate, Lung, Skin, Dermis, Fascia, Muscle, Fat, Bone, Organ, etc...
- Parasites, Worms, Embed, Tape, Monster, Snake, Insect, Herpes, Pox, Other Pathogens, fluke, larva, egg, etc.
- Toxins, Metals, Poisons, Pesticides,
- Bio War (BW), Alien (Alyn)
- System
- Detox
- BioFilm
- **Pork Worms**
- Cancer

### NOTES

These are almost always caused by microbes.

**Pork Worms:** Before assigning pork worms be sure the body will approve that the timing is good for the herxe. If so, tapping raw bacon on the thymus helps the body see them.

The Muscle Test to determine if cancer is present is unreliable at best. Cancer cells contain the host's DNA and this often will affect the Mt concerning this condition. Always recommend your client see a doctor if there is concern about cancer. These codes are for many toxins and microbes which may accompany this disease. Since Gary contract cancer in 2019 many new codes for this have been written.

## Chemical Sensitivity MCS

Muscle test: does anything on this page need to be coded for?

- Allergy

- Emotional Traumas associated with smells
- The Tissue where it Resides: Brain, Breast, Ovary, Prostate, Lung, Skin, Dermis, Fascia, Muscle, Fat, Bone, Organ, etc.
- Parasites, Worms, Embed, Tape, Monster, Snake, Insect, Herpes, Pox, Other Pathogens, etc.
- Toxins, Metals, Poisons, Pesticides, Bio War (BW), Alien (Alyn)
- Detox
- General Nutrient
- Lymph
- Intracell
- System
- Detox
- BioFilm
- Pork Worms

### NOTES

Sometimes over-reactivity (allergy) can be linear and sometimes it can be connected to a traumatic event: a mother leaving, a father's spanking, rape or other violation. If that is true there may be more emotional work required to correct the triggering due to the perfume worn at the time of the betrayal.

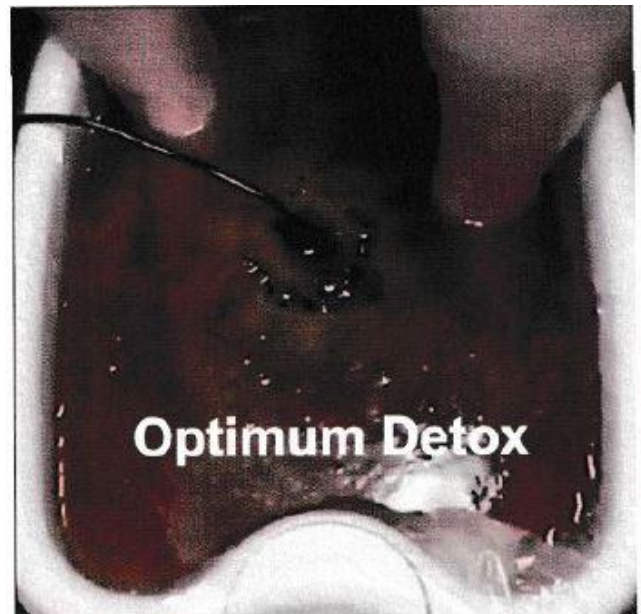
Hal Huggins, the dentist who blew the whistle of the danger of mercury fillings, was over toxified with mercury. His immune system went into overprotect mode, which would cause him to go into shock if he smelled a molecule of mercury in cooked fish. In these cases, go through these codes, detoxification codes and other interventions may be approved. Once the toxins are brought to normal levels, you might Muscle test: does anything on this

page need to be coded for? if the protective systems need a reboot so the unnecessary habit of overprotection is turned off.

Concerning high toxin levels, living organisms may leave toxins when they die, even a natural death. It may be a good idea for the body to kill them so they can't reproduce

If the body has been storing toxins in the brain for years. The body might need help from an ion cleanse, far infrared sauna, products, mucoid plaque removal, etc. to detoxify faster.

I like cheap ion cleanse machines for about \$100 - \$160 like this because it pulls out toxins gently. Sometimes the more expensive machine will pull out too much too fast in very toxic people. Better to detox with a garden hose and not a fire hose. Slow and steady wins the race.



## Migraines & Headaches

Muscle test: does anything on this page need to be coded for?

- Q - Brain Quickstart
- Migraine
- Headache
- **Stress**
- Overwhelmed
- Neck
- MS
- Parkinsons
- Parasites, Worms, Embed, Tape, Monster, Snake, Insect, Herpes, Pox, Other Pathogens, etc.
- **Toxins**, Metals, Poisons, Pesticides, Bio War (BW), Alien (Alyn)
- System
- Detox
- BioFilm
- **Pork Worms**
- **Worms**

### Notes

Though it is unpleasant to acknowledge, **worms** and parasites can live in our eyes, brain, stomach, prostate, ovaries, lungs, - pretty much anywhere. Thankfully you now have a tool with codes to activate the body's immune responses to kill them. To learn more about these just google: "YouTube monsters within me". As you watch your client's herxes and improvements and correlate them with

the codes you sent out the prior week, you will begin to see the connections.

**Stress:** Some people store so much muscular stress in their neck it will create migraines and headaches. Imagine a tourniquet around their neck that might cut off the blood supply. This would be emotional removal, also Muscle test: does anything on this page need to be coded for? Habit Codes. Trauma Spasm Seizure.

If the body has been storing **toxins** in the brain for years. The body might need help from ion cleanse, far infrared sauna, products, mucoid plaque removal, etc. to detoxify faster.

**Google: worm**

**click on eye, worm brain worm, stomach worm, click on images and see what you get on Google**



doctor puis: 15cm parasitic ...



MD Filaine Loa loa en chambre ...

## Acne & Skin Issues

### Muscle test: does anything on this page need to be coded for?

- [CHECK JOINT / MUSCLE PAIN](#) (PG 4)
- [CHECK LUMPS, BUMP, & TUMORS](#) (PG 8)
- Acne
- Skin
- Virus
- Bacteria
- Hormones
- Allergy
- Toxin
- Cyst
- Boil
- Bartonella
- Morgellons
- Rickettsia
- Leishmaniasis (Liesh)
- Lichen Planus (Lich)
- Flesh Eating Bacteria
- Pox
- Fiber
- Staph - Strep - MRSA
- Epstein Barr (EBV)
- Embed
- Parasite

### NOTES

Because creatures that attack collagen tissue there may be a common thread.

Some people tend to detox through the skin. If the skin is allergic to the toxin being removed, you might Muscle test: does anything on this page need to

be coded for? allergy. if the toxin is just acidic and inflammatory (not an allergy) then you might have to Muscle test: does anything on this page need to be coded for? metals, poisons, pesticides, toxins, and detox, lymph, general nutrient to support more effective detox to decrease acne and skin issues.

If the body has been storing toxins for years the body might need help from ion cleanse, far infrared sauna, products, mucoid plaque removal, etc.. to detoxify faster.

## Menses & Menopause

Muscle test: does anything on this page need to be coded for?

- Hormones
- Compounds
- Emotions
- Migraines
- Headaches
- Stress
- Overwhelmed
- Parasites, Worms, Embed, Tape, Monster, Snake, Insect, Herpes, Pox, Pathogens, etc.
- Toxins, Metals, Poisons, Pesticides, Bio war, Alien (Alyn)
- System

### NOTE

Hormones can be given individually or by the "Hormone Packets" -there are three of them - numbered 1 through 3. IE: Hormone Pack 1.

East packet must be done four times, once a month in succession because the female body produces a different hormonal mix on rotation. After menopause, a woman probably needs to do each set once. Once set 1 is done, Muscle test: does anything on this page need to be coded for? on how they are doing and see if they should get "Hormone Pack 2."

Hormonal issues are often related to the shock of the onset of puberty. This is where the misbehaviors often originate.

Also, for many women, there is a relationship between hormones and emotions, emotions must also be Muscle test: does anything on this page need to be coded for?ed because one can trigger the overreaction of the other.

Compounds occur when a hormone might biochemically bond with a toxin, metal, pesticide, bio war toxins, chemical, poison, or other hormonal or a

drug. Ask if there are compounds involved with your client. You may have to mix and match hormones with other things to create the compound.

## Hair Issues

Muscle test: does anything on this page need to be coded for?

- Joint Muscular Pain pg 5
- Hair
- Regen
- Hormones
- Allergy
- Stress
- PTSD
- OCD
- Panic
- Terror
- Anxiety
- Overwhelmed
- Shock
- Trauma
- General Nutrient
- Parasites, Worms, Embed, Tape, Monster, Snake, Insect, Herpes, Pox, Other Pathogens, etc.

Because Hair is supported by collagen tissue, the same things affecting joint and Muscular issues can be affecting hair loss.

## Panic, Anxiety, Ptsd, OCD

Muscle test: does anything on this page need to be coded for?

- Ptsd
- Trauma
- Panic
- Violate
- Anxiety
- Horror
- Fear
- Witness
- Fear of
- Abuse
- Terror
- Anticipate
- Trauma
- Shock
- Trigger
- Overwhelmed
- Energy of
- Vibrat
- Terror
- Horror
- Sex Abuse
- Rape
- Crit
- Dad
- Mom
- Witness
- Threat
- Shame

- Not Enough
- Self
- Trigger (Trig)
- Worth
- Hope
- Despair
- Family
- Strife
- Confront
- Spiritual
- Dna
- Gene
- Aband
- Adopt

### NOTES

Most unprocessed trauma is tied to a person or event. Most often a Mother, Father, Brother, or Sister. The event should arise through conversation or the information on their health history form. Rape, Abandonment, Witnessed Abuse, Violence, an Accident, Robbery, Hurricane, Death, etc.

Sometimes doing the "Barrels Exercise" with your client is most effective because the client identifies the three most important emotions. Be sure to Muscle test: does anything on this page need to be coded for? with the muscle test that the three given are agreed with by the body. Clients may underplay the emotion given and you may have to take "anxiety" to "terror" or "horror."

As you measure your client's symptom reductions, you may find that the depressive emotions begin to rise. This is because these sorts of events will often produce both aggressive emotions and depressive emotions. Sometimes, the predominance of and aggressive emotions like "rage" will mask the presence of depression" and vice versa. Then you might visit (or revisit) - the depression quickstart page. *Continue on next page...*



It is also helpful to note that just because you may have given "fear codes" once doesn't mean the job is done. Sometimes, the body is not ready to deal with an issue. So see it as different closets with different fear toxins in each closet. Your client will raise the issue which will indicate which closet or fear box needs to be addressed again.

Note: If you are approaching a subject and your muscle test shuts down, it may be that your client isn't quite ready to address a topic. Ask them if you have permission to work on this issue. When they say "yes", it may remove the body's reluctance and restore the muscle test.

## Depression, Suicide

Muscle test: does anything on this page need to be coded for?

- Suicide

- Hopeless
- Grief
- Sorrow
- Unjust
- Sad
- Family
- Worthless
- Confuse
- Invisible
- Dizzy
- Same
- Mourn
- Self
- Death
- Criticism
- Loss
- Dad
- Mom
- Brother
- Sister
- Unwanted
- Unheard
- No Voice
- Left out
- Rejected
- Despair
- Invalidate

- Dismiss
- Depress
- Abandon
- Not enough
- Trauma
- Threat
- Anticipate
- Rape
- Violate
- Abuse
- Sex
- Witness
- Powerless
- Helpless
- Disgust
- Disap

### NOTES

**Suicide** Ideation whether in the past or present creates a very powerful emotional toxin. If your client is in the present with this, always recommend a hotline for them.

Most unprocessed trauma is tied to a person or event. Most often a Mother, Father, Brother, or Sister. The event should arise through conversation or the information on the health history form. Rape, Abandonment, Witnessed Abuse, Violence, an Accident, Robbery, Hurricane, Death, etc.

Sometimes doing the "Barrels Exercise" with your client is most effective because the client identifies the three most important emotions. Be sure to Muscle test: does anything on this page need to be coded for? with the muscle test that the three given are agreed with by the body. Clients may underplay the emotion given and you may have to take "anxiety" to "terror" or "horror."

*Continue on next page...*

As you measure your clients' symptom reductions, you may find that the depressive emotions begin to rise. This is because these sorts of events will often produce both aggressive emotions and depressive emotions. Sometimes, the predominance of and aggressive emotions like "rage" will mask the presence of "depression" and vice versa. Then you might visit (or revisit) - the depression quickstart page.

It is also helpful to note that just because you may have given "depression" once doesn't mean the job is done. Sometimes, the body is not ready to deal with an issue. So see it as different closets with different fear toxins in each closet. Your client will raise the issue which will indicate which closet or fear box needs to be addressed again.

Note: If you are approaching a subject and your muscle test shuts down, it may be that your client isn't quite ready to address a topic. Ask them if you have permission to work on this issue. When they say "yes", it may remove the body's reluctance and restore the muscle test.

## Heart Palpitations & Issues

Muscle test: does anything on this page need to be coded for?:

- [CHECK Panic, Anxiety, PTSD, & OCD \(Pg 14\)](#)
- [CHECK Brain & Neurological \(Pg 5\)](#)
- Heart
- Blood
- Parasites (Paras)
- Embed
- Worm
- Pulmonary
- System
- Timing
- Dendrite
- VAGUS

Heart Palpitations, pains, and other issues are often emotionally driven or pathogenically driven. The palpitations can occur if a microbe is attacking a part of the brain, heart or nerve that would affect proper function.

Another common issue might be parasites. The heart will speed up the rate of blood flow to not allow these creatures to lodge in the tissues of the heart.

Of course, emotional toxins lodged in the heart can impact it as well.

## Lyme Disease

Muscle test: does anything on this page need to be coded for?:

- Lyme
- Bartonella
- Babesia
- Borellia
- Protomyxo
- Protozoa (proto)
- Paras
- Worm
- Embed
- Virus
- Bacteria
- EBV
- Staph
- Strep
- Mrsa
- Candida
- Mold
- Fungus
- Yeast
- Morgellons
- Rickettsia
- Metals
- Poisons
- Pesticides
- Toxins
- Biofilms
- Signal Blockers
- Systems

- Energy

Muscle test: does anything on this page need to be coded for? with your client how long they've been ill. If they know it has been for many years, try giving out Lyme codes as a Muscle test: does anything on this page need to be coded for?. We find about 80% of our clients are responding well to these codes without having a diagnosis. The diagnosis isn't really important, their symptoms going down is important.

Muscle test: does anything on this page need to be coded for? any microbe or pathogen

A very high percentage of Lyme people will need emotional work.

Much Lyme disease goes undiagnosed. Doctors fear being persecuted for treating Lyme, and therefore inaccurately avoid making the diagnosis. Anyone who remembers getting sick at a specific date likely has Lyme. Check their body for Lyme.

If you notice that your client had a start to symptoms of "5 years ago" then send them a set of Lyme codes. If the client is 25 years old, that means they were healthy for 20 years! Chances are bugs came into their body and are still there inflaming tissue. If the body doesn't kick in properly they will do what all living things do - eat (which inflames tissue) and populate and colonize (which causes long term suffering and the spread of the symptoms as the creatures populate)

## Lung, Respiratory, Mucous

Muscle test: does anything on this page need to be coded for?

- Q - Depression Suicide Quickstart
- Allergy
- Anaphylaxis
- Lung
- Bronchi
- Mucous
- Respiratory
- Infect
- Entero
- Sinus
- Greif
- Sorrow
- Sad
- Shock
- Influenza
- Virus
- Bacteria
- Paras
- Worm
- Fish
- Infect
- Rat worm
- System

Respiratory issues are most often Allergy, pathogens, or Grief.

## Vaginal & Bladder Issues

### Muscle test: does anything on this page need to be coded for?

- Joint & Muscle Pain Pg 5
- Lumps & Bumps, Cysts, Tumors Pg 9
- Allergy
- Emotions
- Men
- Male
- Husband
- Gall
- Mucous
- Sex
- Rape
- Fear of Pain
- Fear of Intimacy
- Hormones
- Lubrication
- Skin
- Vagina
- Mucous
- Water Gest
- System

associated with rape, but just with verbal abuse. If a woman's current husband or boyfriend is the best in the world, she can still be triggered this way physically due to past bad relationships just by physical proximity.

### NOTES

Vaginal Tissue is collagen tissue and any pathogen can attack that. Beyond this, it is a moist area so Muscle test: does anything on this page need to be coded for? things that can grow in this kind of environment (Mucous, Water Gest, Bacteria, Mold, Candida, Fungus, etc.)

Emotional Issues with men. A very common response to male unkindness or abuse is the female body protecting itself from intimacy with men by creating a vaginal symptom. It doesn't have to be

## Other

### Muscle test: does anything on this page need to be coded for?

The category of "other" can be complex and expansive. This is a partial list of things for you to Muscle test: does anything on this page need to be coded for? if you find this. Here is where you expand your questioning of your clients body. Get creative, "parallell universe? past life? something material? antimatter? Is this fixable? Just keep trying. This is obviously for more sophisticated practitioners who've gone past all the common reasons for symptoms caused by bodily misbehavior.

- Accident/Surgery
- Alien (Use "Alyn")
- Dna/Rna/Xna
- Alilghn
- Meridian
- Ancestral
- Gene
- Miasm
- Beliefs
- Healer
- Program
- Chakra
- Herx
- Shield
- Contracts
- Infect
- Vaccine
- Cords
- Inutero
- Vow
- Dead Bones

- Blocks
- Kundalini
- Ancestor
- Blocked past
- Scords
- Drug
- Herx
- Parallel life
- Past life ("pstl")
- Realignment



## No or Stalled symptom reduction?

If they are herxing but the numbers don't go down, check lymph and detox. Herxe indicates the body is changing behaviors. However, if the lymph is swollen from pathogenic attack, the toxins may not be removed and numbers may fail to drop. So, check if lymph codes are approved, and parasites, embedded, other pathogens, and venom. (Swelling could also be anaphylaxis.)

If no herxe and no reductions in symptoms they may have a "house divided" and there are codes you can check.

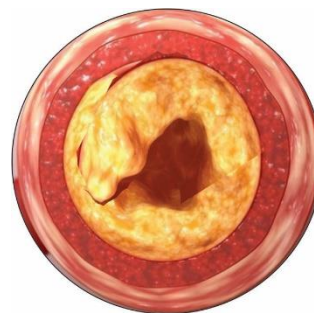
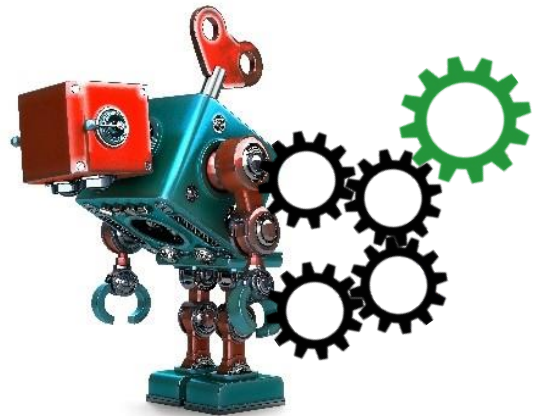
- TCS Codes: Treatment Completion System (two sets)
- Code: accept, integrate,
- Health Accept
- Heart Wall
- Check if the Lymphatic System is clogged

This normally comes from childhood abuse. If this doesn't work, ask if a Theta Healer, a Cranial Sacral person, or some other gifted person may help clear it. If you have any gifted people who have unusual gifts, muscle test it.

## Is your muscle test blocked?

- Are you hydrated?
- Fix your polarity by running your finger from your forehead to the occiput.
- Rub your solar plexus with MT answers.
- Rub your navel several times to center yourself.
- Are you emotionally tied to the outcome? Get dispassionate and accept what the body says. You can always argue with your arm later!
- Are you too tired and did you shut down? You may need rest.
- Do you suspect spiritual interference? Pray.

- Are you dealing with emotions with your client? Ask them for permission to work on the sensitive subject. When they give you the "yes" they are telling their body you have permission.



Clogged Lymphatic System



Clear Lymphatic System

